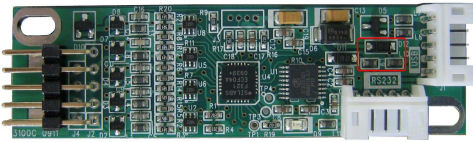


Hardware Specifications

Power Requirements	+5VDC (+4.75 to +5.25 VDC)
Operating Temperature	-40 ~ 85°C
Storage Temperature	-65 ~ 150°C
Relative Humidity	10% to 90% RH
Protocol	HID-USB Model : USB 2.0 Full speed, RS232 Model : 9600 bauds, None parity, 8 data bits, 1 stop bit
Resolution	4096 x 4096
Accuracy	Max. +/- 0.5% tolerance
Tolerance	
Report Rate	RS232: Max. 160 points/sec USB: Max. 250 points/sec
Response Time	Max. 20 ms
Pin Out Definition	Auto Detector
Pin Out Definition	4 wire model (X+、Y+、X-、Y-) (X+、X-、Y+、Y-) (X+、Y+、Y-、X-) 5 wire model (UL、UR、COM、LL、LR) ELO type (UL、UR、COM、LR、LL) 3M type
Panel Resistance	50 ~ 200 ohm (pin to pin on the same layer, touch resistance under 3.5k ohm)
PC link	When both USB & RS232 cables connected to PC at the same time, only USB will enable. (Auto Switch USB > RS232)



Software Feature

Calibration	Fast full oriental 4 points position
Compensation	Edge compensation, Accuracy 25 points linearity compensation
Draw Test Controller	Position and linearity verification Support multiple controllers, Dynamical add/ remove controllers Change controller interface without reboot
Languages	Support 4 languages for Windows
Mouse Emulator	Right / left button emulation. Auto Right / left Click
Touch Style	Support Drawing a Mode、Support button a Mode、Touch Off/ on Switch
Double Click	Configurable double click speed、Configurable double click area
Sound	No sound
COM Port Support	COM1 ~ COM255 for Windows and Linux Support COM1 ~ COM8 for DOS
Display Support	Support monitor/ display rotation Support multiple monitors Support split monitor
OS Support	All Windows : Win7-32 bit O.S Win7 : XP-64 bit O.S MS-DOS All Linux QNX

