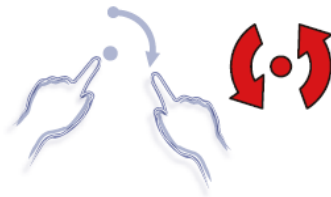
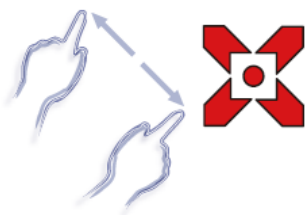
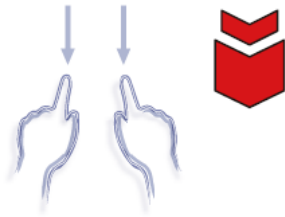


**15" inch Embedded Touch Monitor(Projected capacitive Multi-Touch)**

**Products application :**

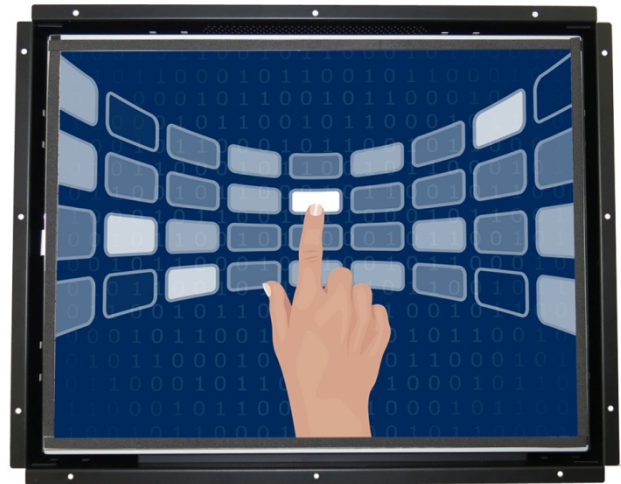
- POS Terminal
- Industrial PC
- Kiosk
- Gaming
- Medical apparatus
- Personal computer
- Mobile GPS
- Office automation
- Security system of the house
- Car-mounted amusement
- Military equipment
- Communicate



# 15" inch Embedded Touch Monitor(Projected capacitive Multi-Touch)

## Display Specifications :

|                   |   |
|-------------------|---|
| Active Area       | 304 × 228 mm                              |
| Pixel Pitch       | 0.297 × 0.297 mm                          |
| Brightness        | 250 cd/m <sup>2</sup>                     |
| Contrast Ratio    | 700 : 1                                   |
| Resolution        | 1024 x 768 ( XGA )                        |
| Viewing Angle     | L/R 160° ; U/D 140°                       |
| Response Time     | 5 ms ( Tr + Tf )                          |
| Display Colors    | 16.2M                                     |
| Display Modes     | 640×480 ; 800×600 ; 1024×768              |
| Signal input      | 15 Pin D_Sub ; Mini-Audio in ; DVI        |
| Mini-Audio out    | 1W ( 8Ω ) × 2                             |
| OSD Keyboard      | ⊙ Menu/Select ⊙ - ⊙ + ⊙ Auto/Exit ⊙ Power |
| Power Source      | DC 12V ; ≤15w ; Standby ≤1w               |
| Power Consumption |   |
| Storage           | -40~85°C ; -30~80°C                       |
| Operation         |   |
| VESA              | 75×75 or 100×100 mm                       |
| Casing Colors     | Black                                     |
| Casing Size       | 362 × 288 × 39.5 mm ; 2.85 kg ( W×H×D )   |
| Weight            |   |
| Carton            | 400 × 125 × 330 mm ; 3.6 kg ( W×H×D )     |
| gross weight      |   |



## Touch Feature :

|              |  |
|--------------|--|
| Input Method | Capacitive stylus, Finger                |
| Linearity    | ≤2.5mm                                   |
| Surface      | ≥7H                                      |
| Life Time    | Unlimited                                |
| Application  | Writing and Signature Capture Capability |
| PC Link      | USB or RS232(Single-Touch)               |

## Software Feature :

|                   |   |
|-------------------|---|
| Draw Test         | Position and linearity verification   |
| Controller        | Support multiple controllers  |
| Languages         | English · Simple Chinese · Traditional Chinese · Japanese · French · German · Spanish · Korean · Arabic · Czech · Danish · Dutch · Greek · Hungarian · Italian · Norwegian · Russian · Polish · Portuguese · Slovenian · Swedish · Thai · Turkish |
| Mouse Emulator    | Right / left button emulation. Auto Right / left Click ( PDA function )   |
| Touch Style       | Drawing a Mode · button a Mode · Touch Off/ on Switch   |
| Double Click      | Configurable double click speed · Configurable double click area  |
| Sound Modes       | No sound · Touch down · Touch up  |
| Display Support   | display rotation · Support multiple monitors  |
| Division Pattern  | Support two halves and four parts with touch function, you can also create your own division patterns.  |
| Settings:         |   |
| Edge compensation | Support edge compensation and you can also add your own numbers for it.   |
| Support O.S       | All Windows-32 bit O.S<br>Windows7-8-10 ; XP-64 bit O.S<br>Android ; A II Linux ; MAC   |

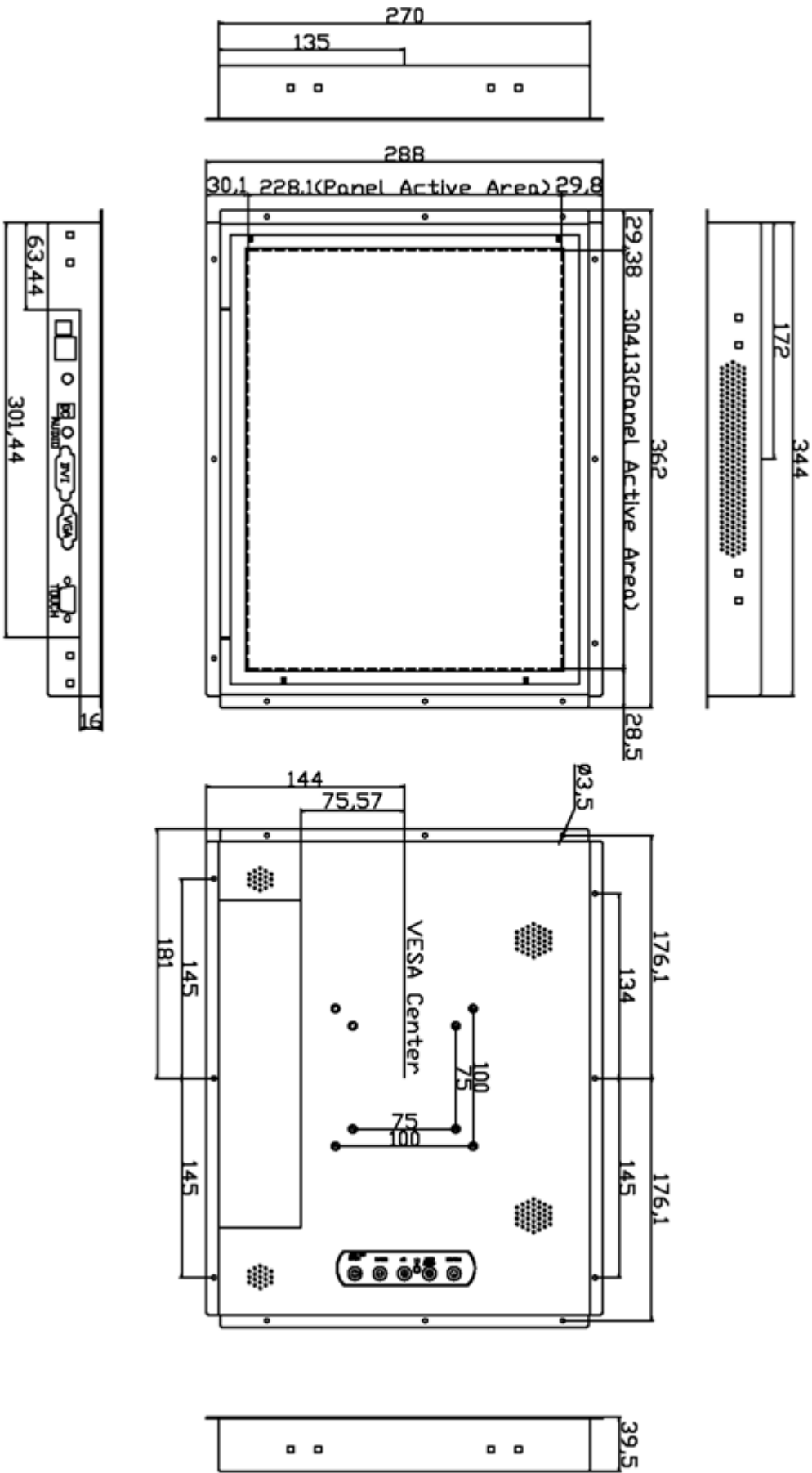
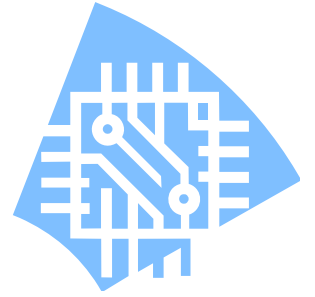


## Order information :

|                       |   |                       |                             |
|-----------------------|---|-----------------------|-----------------------------|
| AIM-TMOPPCTU150-R21 : | 【VGA/AUDIO/DVI/USB-TOUCH】   | AIM-TMOPPCTU150-R22 : | 【VGA/AUDIO/DVI/RS232-TOUCH】 |
| Accessory             | VGA Cable / AC90~260V Adapter / Power Cable / Audio Cable / USB or RS232 Cable / Cleaning wipes / Driver Disk |                       |                             |
|                       | ※DVI Cable(Optional)  |                       |                             |



Dimensions :



Unit:mm