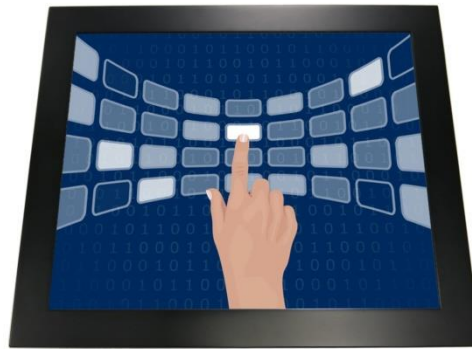


# 19" Resistive Single Touch Monitor ( Embedded )

## Products application :

- POS Terminal
- Industrial PC
- Kiosk
- Gaming
- Medical apparatus
- Personal computer
- Mobile GPS
- Office automation
- Security system of the house
- Car-mounted amusement
- Military equipment
- Communicate



AIM-PM5R190-R21



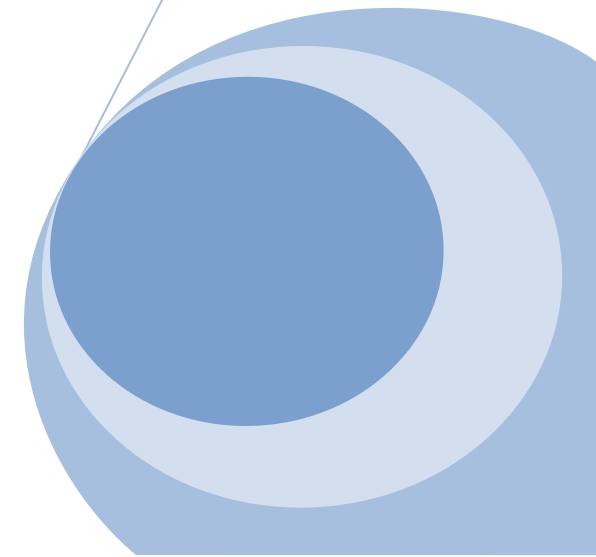
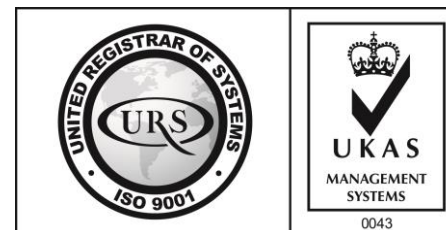
AIM-TMOP5R190-R21

## Order information :

## Touch interface :

## Mount type :

AIM-PM5R190-R21	USB	Embedded ( Panel Mount )
AIM-PM5R190-R22	RS232	
AIM-TMOP5R190-R21	USB	Embedded ( Open Frame )
AIM-TMOP5R190-R22	RS232	



## 19" Resistive Single Touch Monitor ( Embedded )

### Display Specifications :

Active Area	376 × 301 mm
Pixel Pitch	0.294 × 0.294 mm
Brightness	250 cd/m <sup>2</sup>
Contrast Ratio	1000 : 1
Resolution	1920 x 1080 ( SXGA )
Viewing Angle	L/R178° ; U/D170°
Response Time	5ms ( Tr + Tf )
Display Colors	16.7M
Display Modes	640×480 ; 800×600 ; 1024×768 ; 1280×1024
Signal input	VGA ; Audio ; DVI
Speaker	1W ( 8Ω ) × 2
OSD Keyboard	⊙Power ⊙Auto adjust ⊕ ⊖ ⊙Menu
Power Source	DC 12V ( DC Jack Φ2.1mm )
Power Consumption	≤16w
Storage 、 Operation	-20~60°C ; 0~50°C
VESA	75×75 ; 100×100 mm
Casing Colors	Black ( OEM other colors )
Casing Size 、 Weight	【 PM449.7×374.4×43.5 mm 5kg 】 ; 【 OP438×369.7×37.5 mm 4.5kg 】 ( W×H×D )
Carton 、 gross weight	490 × 160 × 432 mm 【 PM6.7 kg 】 ; 【 OP6.2 kg 】 ( W×H×D )
Accessory	VGA cable / Audio cable / AC100~240V Adapter / Power cable / USB or RS232 cable / Touch pen / Cleaning wipes / Driver Disk ※DVI cable ( Optional )

※AiM Touch has the right to update specs without further notice



AIM-PM5R190-R21



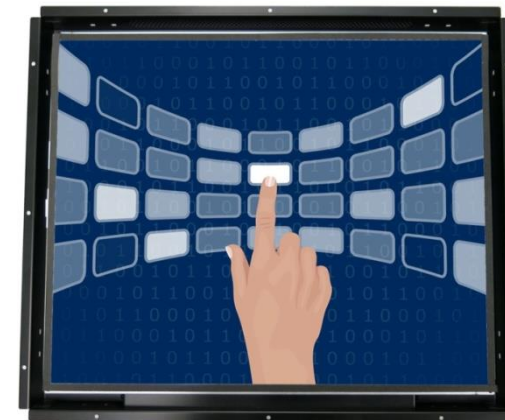
## 19" Resistive Single Touch Monitor ( Embedded )

### Touch Feature :

Input Method	Finger, gloved hand, or stylus activation
Activation Force	≤50g
Linearity	≤1.5%
Surface	≥3H
Life Time	≥35,000,000
Application	Writing and Signature Capture Capability

### Software Feature :

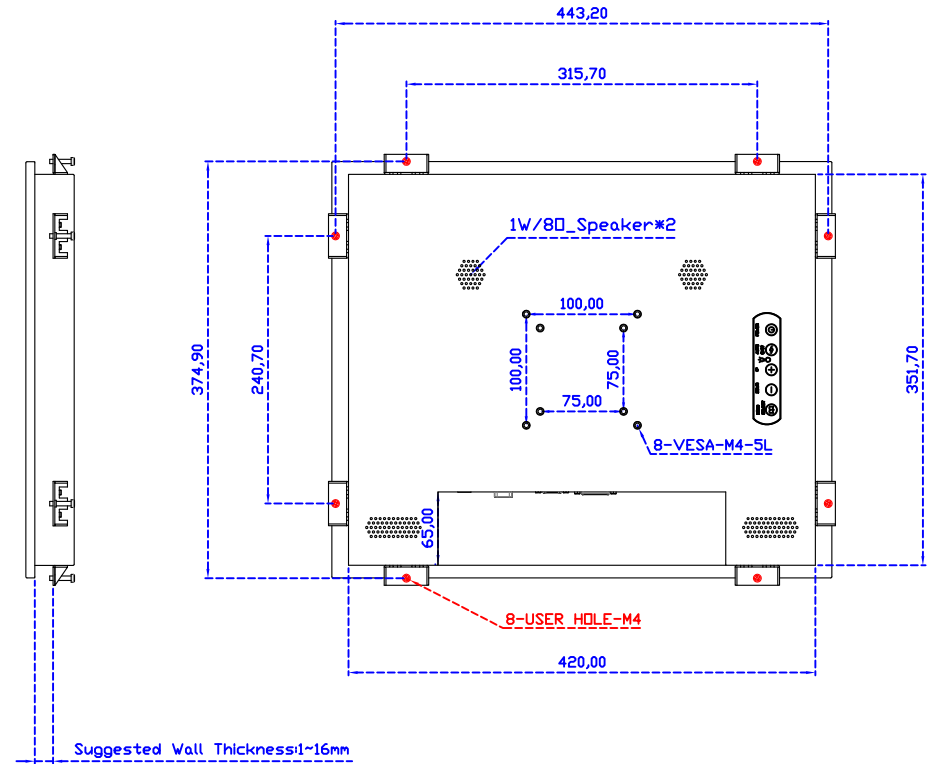
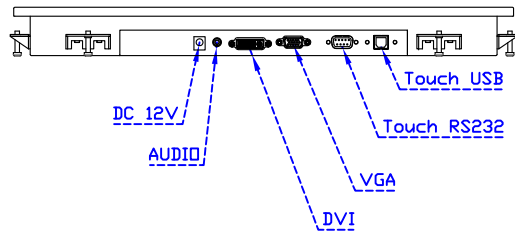
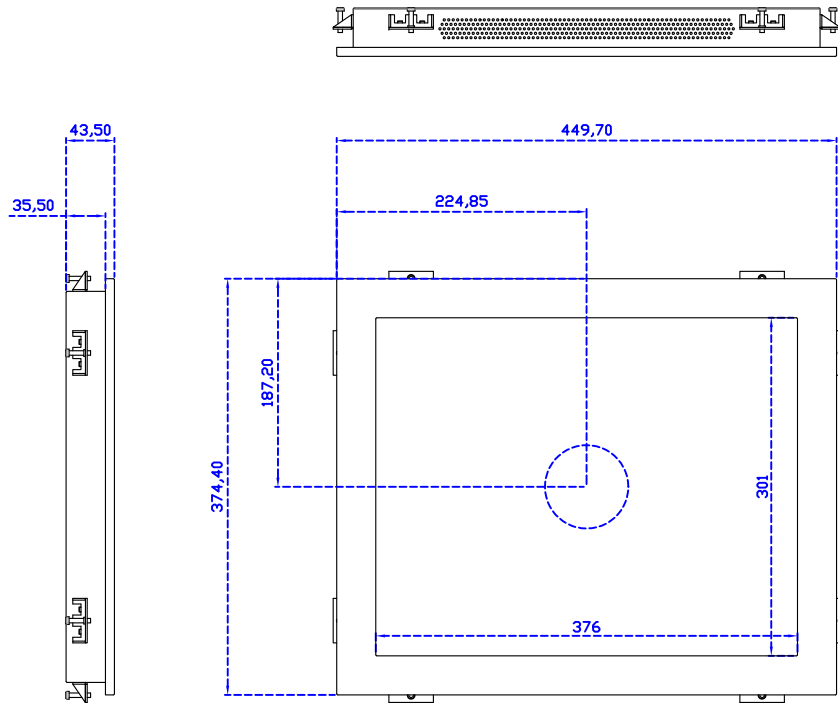
Calibration	Fast full oriental 4 points position
Compensation	Edge compensation. Accuracy 25 points linearity compensation
Draw Test	Position and linearity verification
Controller	Support multiple controllers
Languages	English · Simple Chinese · Traditional Chinese · Japanese · French · German · Spanish · Korean · Arabic · Czech · Danish · Dutch · Greek · Hungarian · Italian · Norwegian · Russian · Polish · Portuguese · Slovenian · Swedish · Thai · Turkish
Mouse Emulator	Right / left button emulation. Auto Right / left Click ( PDA function )
Touch Style	Drawing a Mode · button a Mode · Touch Off/ on Switch
Double Click	Configurable double click speed · Configurable double click area
Sound Modes	No sound · Touch down · Touch up
COM Port Support	COM1 ~ COM255 for Windows and Linux COM1 ~ COM8 for MS- DOS
Display Support	display rotation · Support multiple monitors
Support O.S	All Windows-32/64bit O.S Android ; Linux ; MAC



AIM-TMOP5R190-R21

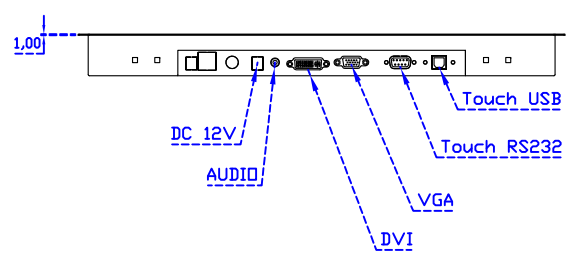
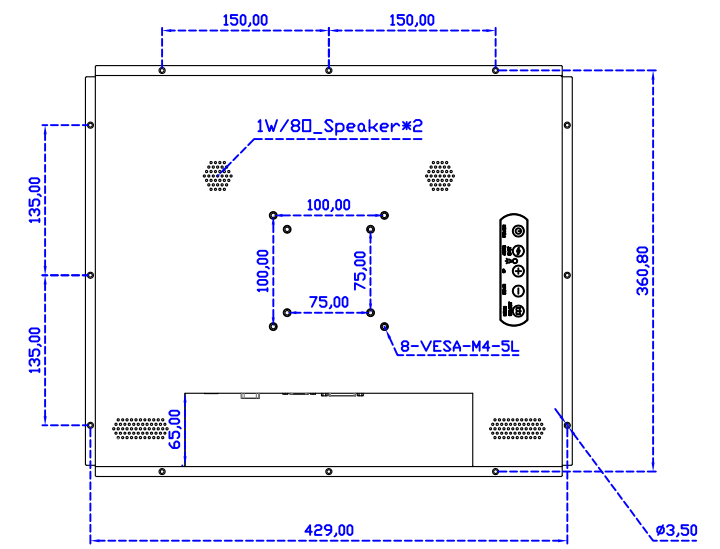
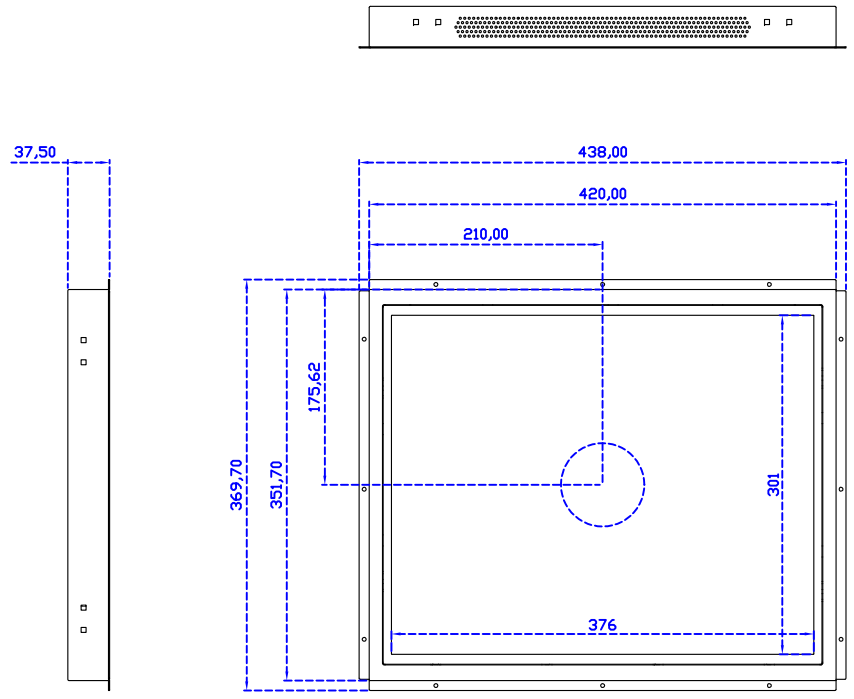


**3 Year Warranty**  
LCD Panel 1 Year



19" Embedded Touch Monitor.  
(Panel Mount)

AIM-PMxxxx190-R21



19" Embedded Touch Monitor.  
 (Open Frame)

AIM-TMOPxxxx190-R21