

21.5" Resistive Single Touch Monitor (Embedded)

Products application :

- POS Terminal
- Industrial PC
- Kiosk
- Gaming
- Medical apparatus
- Personal computer
- Mobile GPS
- Office automation
- Security system of the house
- Car-mounted amusement
- Military equipment
- Communicate



AIM-PM5R215-R21W



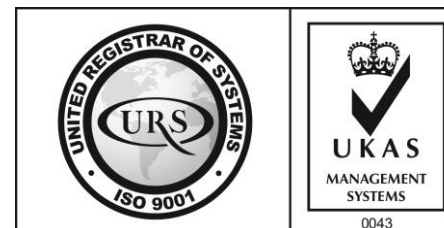
AIM-TMOP5R215-R21W

Order information :

Touch interface :

Mount type :

| | | |
|--------------------|-------|--------------------------|
| AIM-PM5R215-R21W | USB | Embedded (Panel Mount) |
| AIM-PM5R215-R22W | RS232 | |
| AIM-TMOP5R215-R21W | USB | Embedded (Open Frame) |
| AIM-TMOP5R215-R22W | RS232 | |



21.5" Resistive Single Touch Monitor (Embedded)

Display Specifications :

| | |
|-----------------------|--|
| Active Area | 476 × 268 mm |
| Pixel Pitch | 0.24795 × 0.24795 mm |
| Brightness | 500 cd/m ² |
| Contrast Ratio | 1000 : 1 |
| Resolution | 1920 x 1080 (Full HD) |
| Viewing Angle | L/R178° ; U/D178° |
| Response Time | 14ms (Tr + Tf) |
| Display Colors | 16.7M |
| Display Modes | 640×480 ; 800×600 ; 1024×768 ; 1280×720 ; 1280×800 ; 1280×1024 ; 1360×768 ; 1440×900 ; 1680×1050 ; 1920×1080 |
| Signal input | VGA ; Audio ; DVI |
| Speaker | 1W (8Ω) × 2 |
| OSD Keyboard | ⊙Power ⊙Auto adjust ⊕ ⊖ ⊙Menu |
| Power Source | DC 12V (DC Jack Φ2.1mm) |
| Power Consumption | ≤26w |
| Storage 、 Operation | -20~60°C ; 0~50°C |
| VESA | 75×75 ; 100×100 mm |
| Casing Colors | Black (OEM other colors) |
| Casing Size 、 Weight | 【 PM 546×337×47 mm 5.5 kg 】；【 OP 542.6×333.19×41 mm 4.8 kg 】(W×H×D) |
| Carton 、 gross weight | 590 × 480 × 185 mm 【 PM 7.45 kg 】；【 OP 6.75 kg 】(W×H×D) |
| Accessory | VGA cable / Audio cable / AC100~240V Adapter / Power cable / USB or RS232 cable / Touch pen / Cleaning wipes / Driver Disk ※DVI cable (Optional) |

※AiM Touch has the right to update specs without further notice



AIM-PM5R215-R21W

21.5" Resistive Single Touch Monitor (Embedded)

Touch Feature :

| | |
|------------------|---|
| Input Method | Finger, gloved hand, or stylus activation |
| Activation Force | ≤50g |
| Linearity | ≤1.5% |
| Surface | ≥3H |
| Life Time | ≥35,000,000 |
| Application | Writing and Signature Capture Capability |

Software Feature :

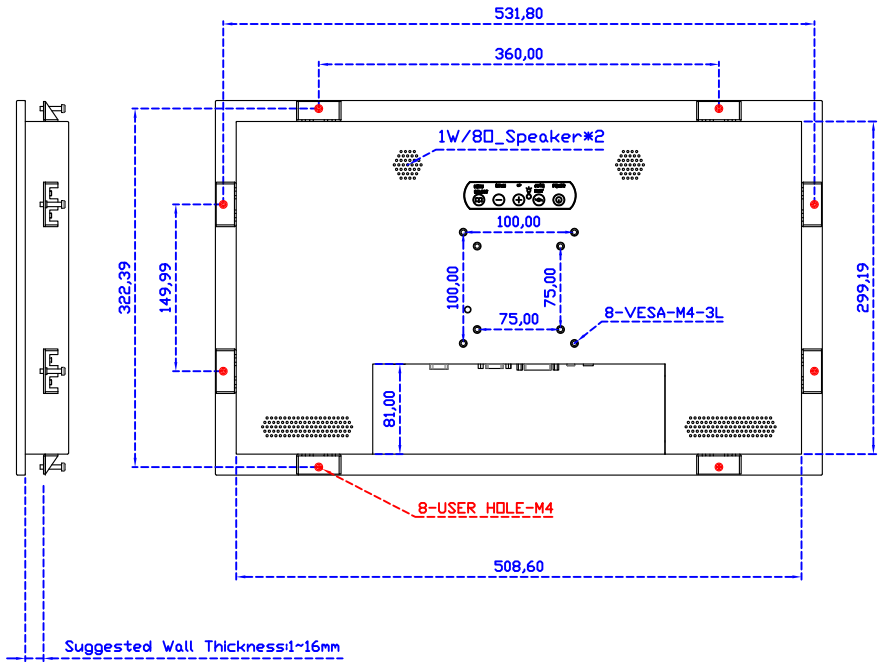
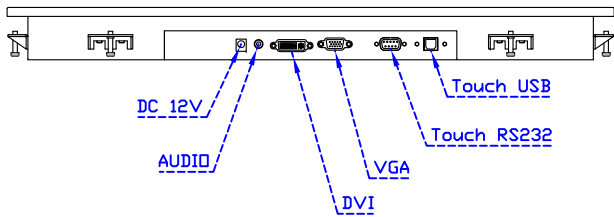
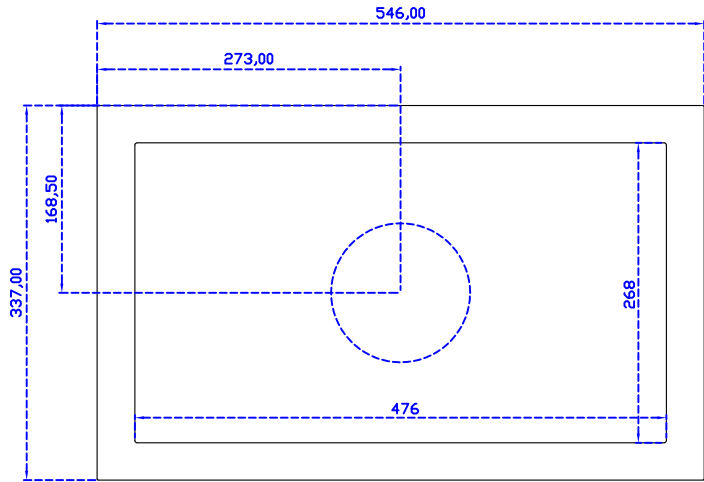
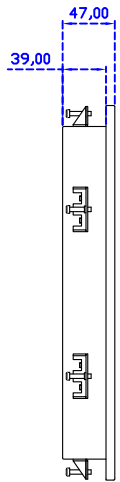
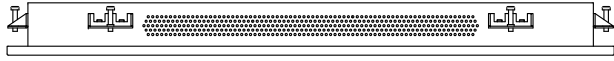
| | |
|------------------|---|
| Calibration | Fast full oriental 4 points position |
| Compensation | Edge compensation. Accuracy 25 points linearity compensation |
| Draw Test | Position and linearity verification |
| Controller | Support multiple controllers |
| Languages | English · Simple Chinese · Traditional Chinese · Japanese · French · German · Spanish · Korean · Arabic · Czech · Danish · Dutch · Greek · Hungarian · Italian · Norwegian · Russian · Polish · Portuguese · Slovenian · Swedish · Thai · Turkish |
| Mouse Emulator | Right / left button emulation. Auto Right / left Click (PDA function) |
| Touch Style | Drawing a Mode · button a Mode · Touch Off/ on Switch |
| Double Click | Configurable double click speed · Configurable double click area |
| Sound Modes | No sound · Touch down · Touch up |
| COM Port Support | COM1 ~ COM255 for Windows and Linux COM1 ~ COM8 for MS- DOS |
| Display Support | display rotation · Support multiple monitors |
| Support O.S | All Windows-32/64bit O.S Android ; Linux ; MAC |



AIM-TMOP5R215-R21W

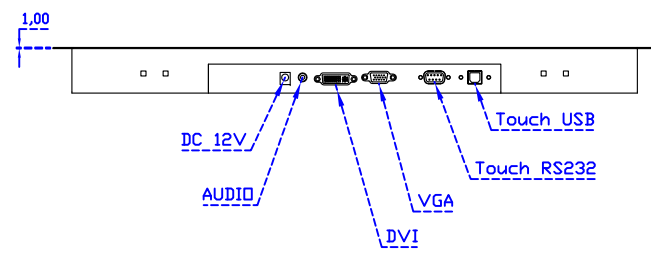
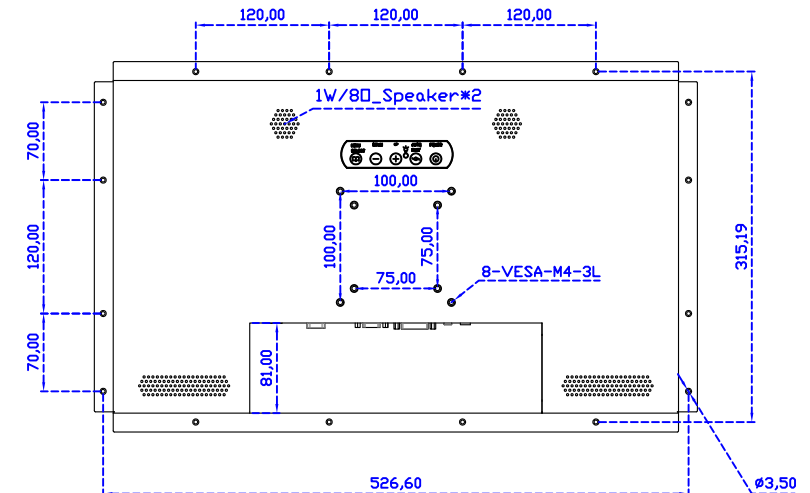
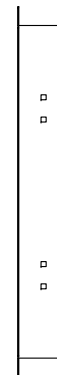
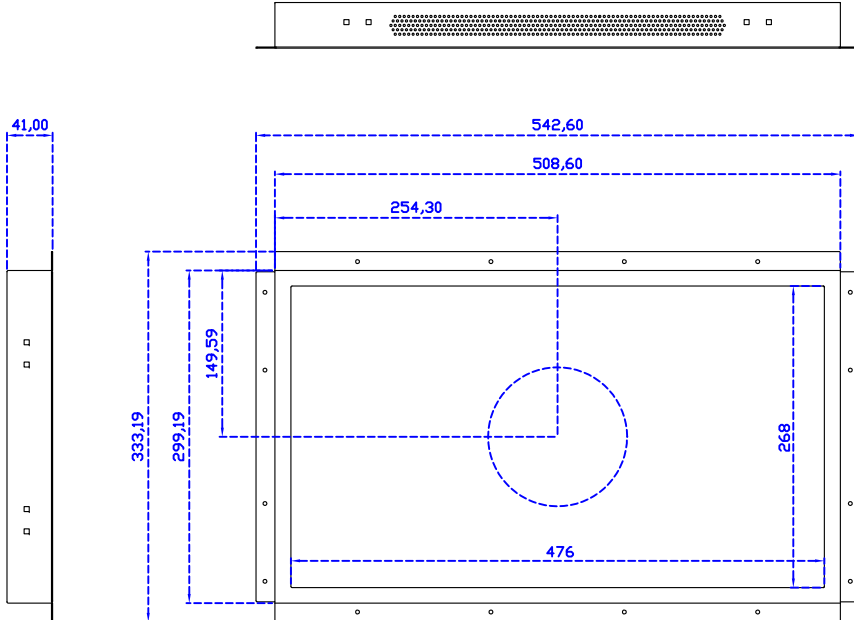


3 Year Warranty
LCD Panel 1 Year



21.5" Embedded Touch Monitor.
(Panel Mount)

AIM-PMxxxx215-R21W



21.5" Embedded Touch Monitor.
(Open Frame)

AIM-TMOPxxxx215-R21W